

# C66

## Handheld Computer

## Accessories



### Standard

#### Adapter



PWR-C66-5V2A-CN



PWR-C66-5V2A-EU



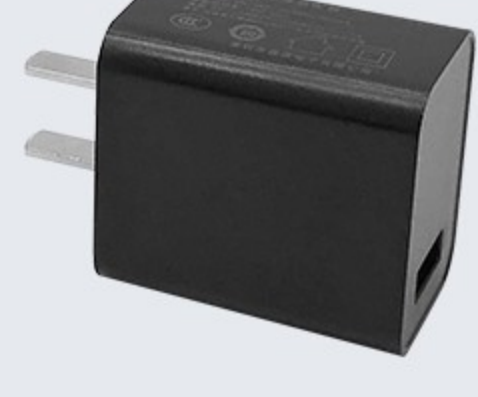
PWR-C66-5V2A-UK



PWR-C66-5V2A-US

Adapter(CN/EU/UK/US), I/P: 100-240V, O/P: 5V2A, use with DC-BK-TypeC cable

#### QC Adapter



PWR-18W-CN



PWR-18W-EU



PWR-18W-UK



PWR-18W-US

Quick Charge adapter(CN/EU/UK/US), I/P: 100-240V, O/P: 5V3A/12V1.5A/9V2A, use with DC-BK-TypeC cable

Comment: standard adaptor and QC adaptor are alternative.

#### USB Cable



**DC-BK-TypeC**  
1.0 meter Type-C cable

#### Battery



**BTRY-C66-43MA**  
4300mAh Li-Ion battery, 3.8V output

### Optional

#### Rugged Rubber Boot



**RB-C66-RR/RB-C66-RRP**

Rugged Rubber Boot only, omni-directional protected.

RB-C66-RR does not support charging cradle.

RB-C66-RRP is pre installed with Type C & Pogo Pin I/O connector, then it supports CRD-C66-RBC/CRD-C66-RBCE charging cradle.



**RB-C66-RRH/RB-C66-RRHP**

Rugged Rubber Boot with hand strap, omni-directional protected.

RB-C66-RRH does not support charging cradle.

RB-C66-RRHP is pre installed with Type C & Pogo Pin I/O connector, then it supports CRD-C66-RBC/CRD-C66-RBCE charging cradle.



**RB-C66-RRC/RB-C66-RRCP**

Rugged Rubber Boot with belt clip, omni-directional protected.

RB-C66-RRC does not support charging cradle.

RB-C66-RRCP is pre installed with Type C & Pogo Pin I/O connector, then it supports CRD-C66-RBC/CRD-C66-RBCE charging cradle.



**RB-C66-P**

Type C & Pogo Pin I/O Connector, to be mounted with the rugged rubber boot, enable it to support charging cradle(CRD-C66-RBC/RBCE).The wired network is available when the rugged rubber boot is placed on the cradle(CRD-C66-RBCE).



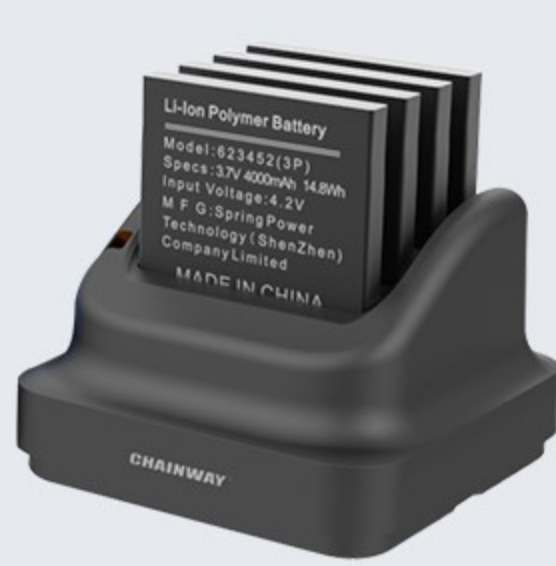
**RB-C66EXT-RR / RB-C66EXT-RRP**

Rugged Rubber Boot only, omni-directional protected. Support for volume measurement/built-in UHF/fingerprint device.

RB-C66EXT-RR does not support charging cradle.

RB-C66EXT-RRP is pre installed with Type C & Pogo Pin I/O connector, then it supports CRD-C66EXT-RBC/CRD-C66EXT-RBCE charging cradle.

#### Charging Cradles & Adapters



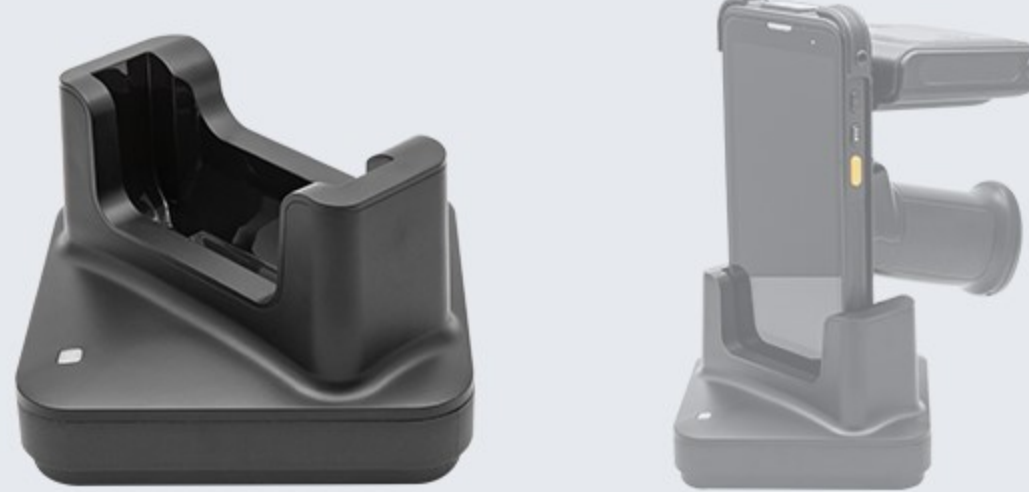
**CRD-C66-MBC**

Charging Cradle for main battery, up to 4 slots, use with DCP-WR-12V2A-XX adapter.



**CRD-C66-PBC**

Charging Cradle for pistol battery, up to 2 slots, use with DCP-WR-12V2A-XX adapter.



**CRD-C66-DP**

C66 charging cradle, only for device with pistol grip or device with UHF, use with DCPWR-12V2A-XX adapter.



**CN**

**UK**

**EU**

**US**

**DCPWR-12V2A-XX**  
Adapter(CN/EU/UK/US), I/P: 100-240V, O/P: 12V2A, DC



**CRD-C66-INS**

**CRD-C66-RBC**

**CRD-C66-RBCE**



**CRD-C66EXT-INS**

**CRD-C66EXT-RBC**

**CRD-C66EXT-RBCE**

**CRD-C66-RBC/CRD-C66-RBCE**  
Charging Cradle for device, use with DCPWR-12V2A-XX adapter. CRD-C66-RBCE is an advanced CRD-C66-RBC, w/sync, w/ethernet, w/DC. The cradle cup has an insert that must be removed prior to inserting the C66 with Rugged Boot.

**CRD-C66EXT-RBC / CRD-C66EXT-RBCE**  
Charging Cradle for volume measurement/built-in UHF/fingerprint device, include the cradle cup(CRD-C66EXT-INS), support volume measurement, built-in UHF and fingerprint device, use with DCPWR-12V2A-XX adapter. The cradle cup has an insert that must be removed prior to inserting the volume measurement, built-in UHF and fingerprint device with Rugged Boot.



**CRD-MCB**

The base of 4-slots charging cradle set for 4 pieces of cradle, use with DCPWR-12V5A-XX adapter.

For load balance, recommendation:

1. 4 x cradle for device
2. 3 x cradle for device + 1 x cradle for main battery
3. 2 x cradle for device + 1 x cradle for main battery + 1 x cradle for pistol battery

#### Vehicle Cradle



**CRD-C66-VC**

Vehicle Charger Cradle, with type-C, use with DC-BK-TypeC cable. Car holder and car adapter need to be purchased separately

#### Rubber Bumper



**RB-C66-PR**

Protective rubber bumper, upper and lower  
4 pcs M1.6 screws are necessary.

#### Hand Strap



**RB-C66-HS**

Hand strap with buckle  
2 pcs M1.6 screws are necessary.

#### Screen Protector



**SP-C66**

Tempered glass screen protector

#### Pistol Grip



**RB-C66-PS**

Snap-On Trigger Handle and Rugged Boot Kit, use with optional pistol battery  
4 pcs M1.6 screws are necessary.



**BTY-C66-PB**

Pistol battery, 5,200 mAh